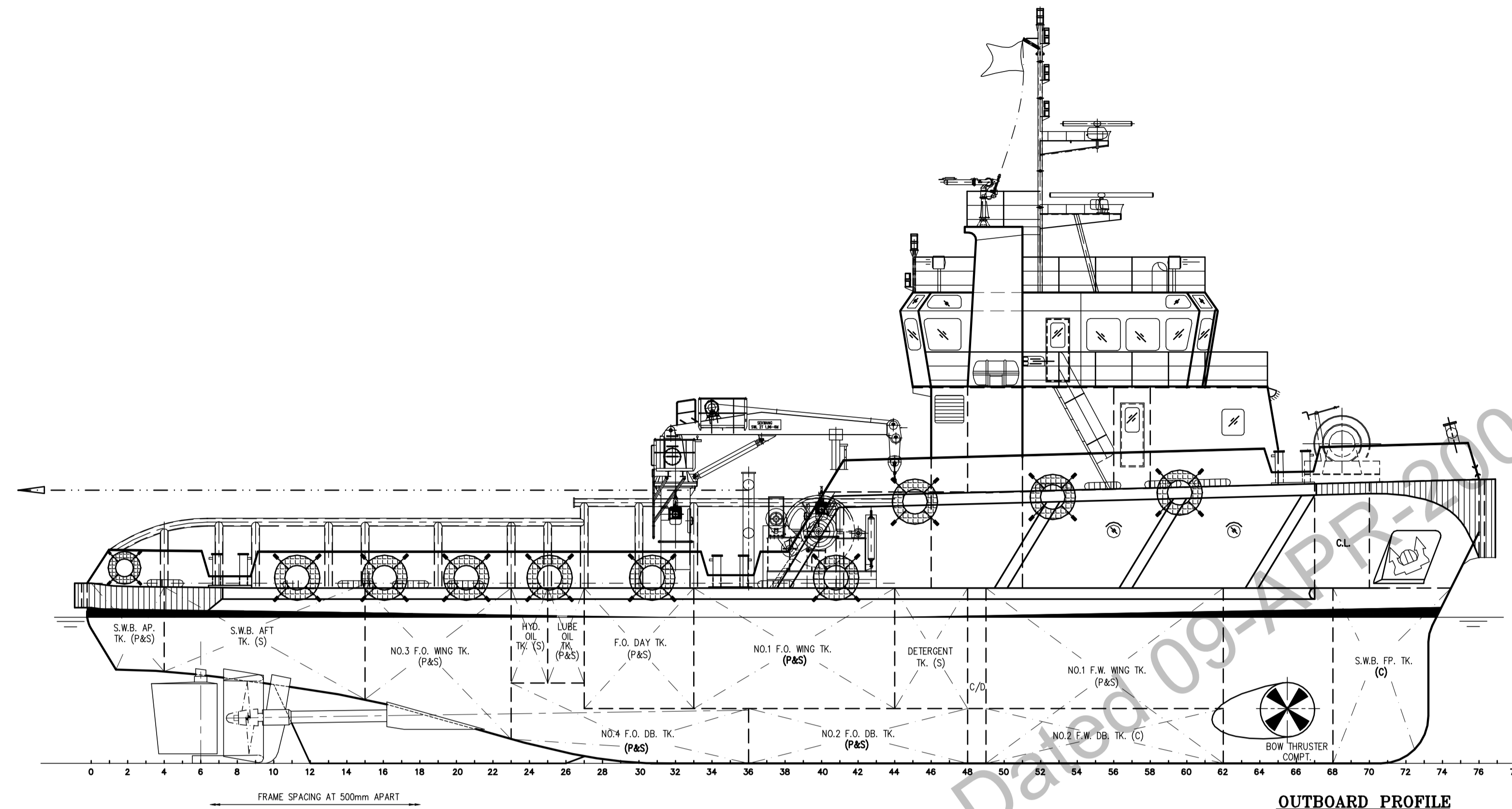
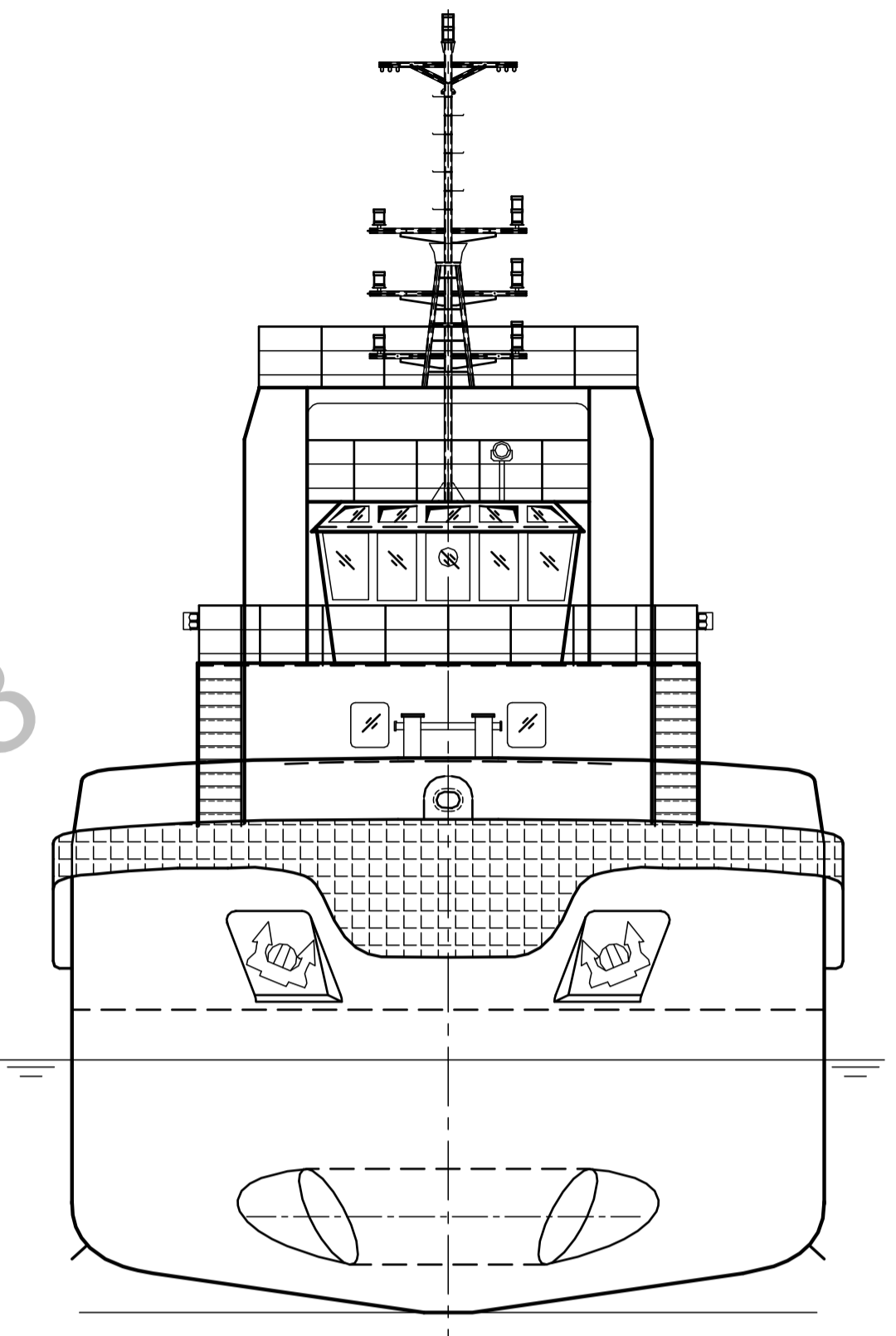


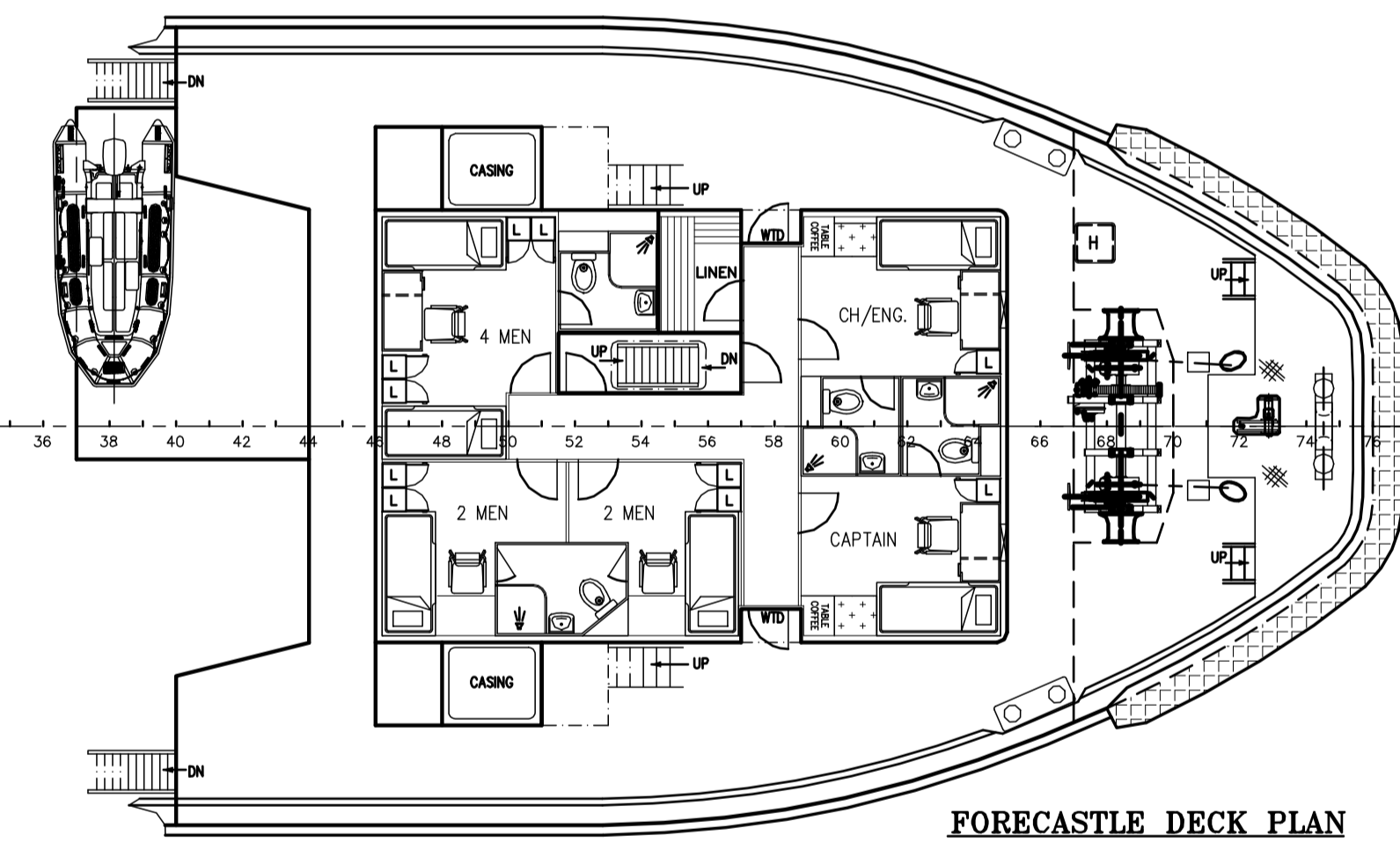
STERN VIEW



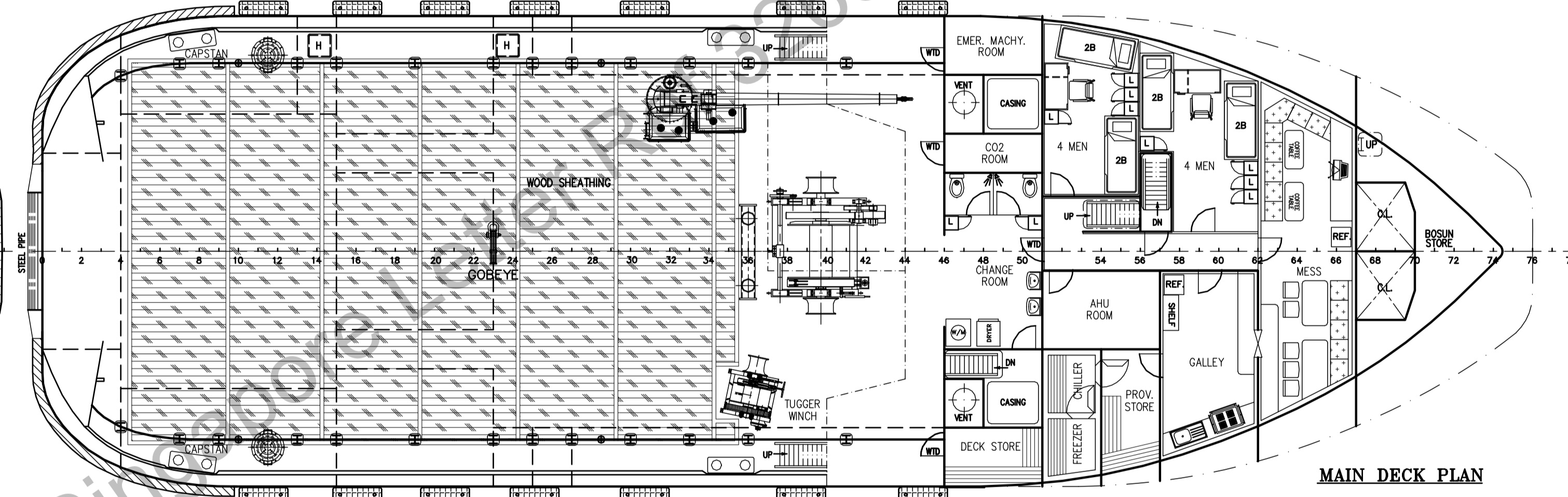
OUTBOARD PROFILE



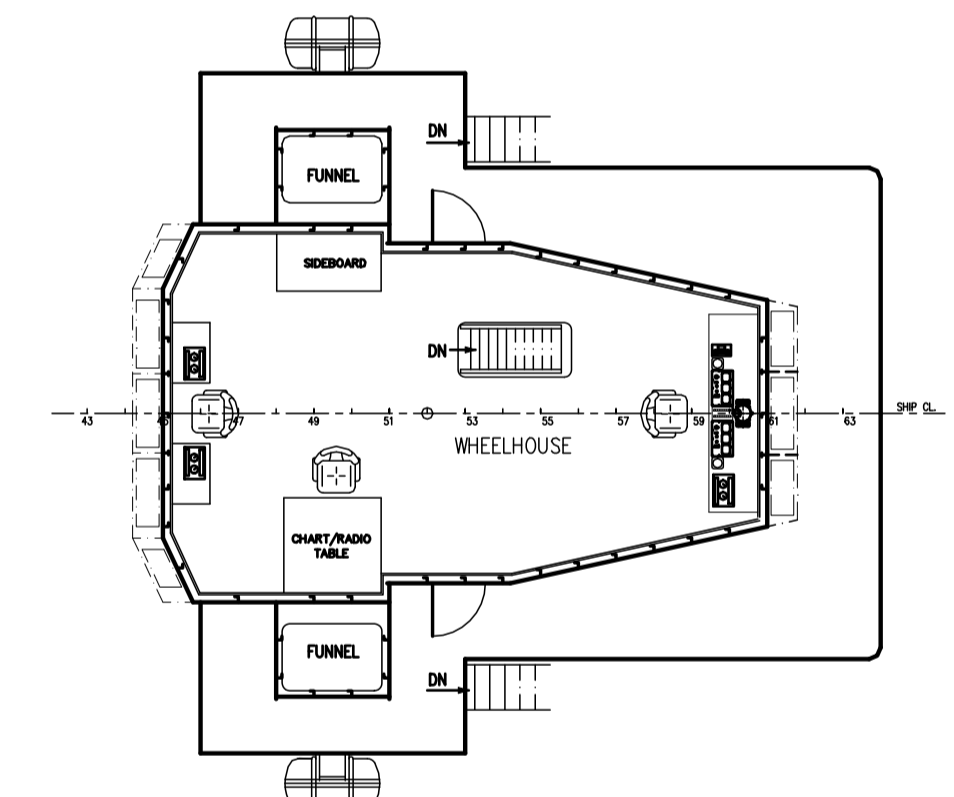
FRONT VIEW



FORECASTLE DECK PLAN



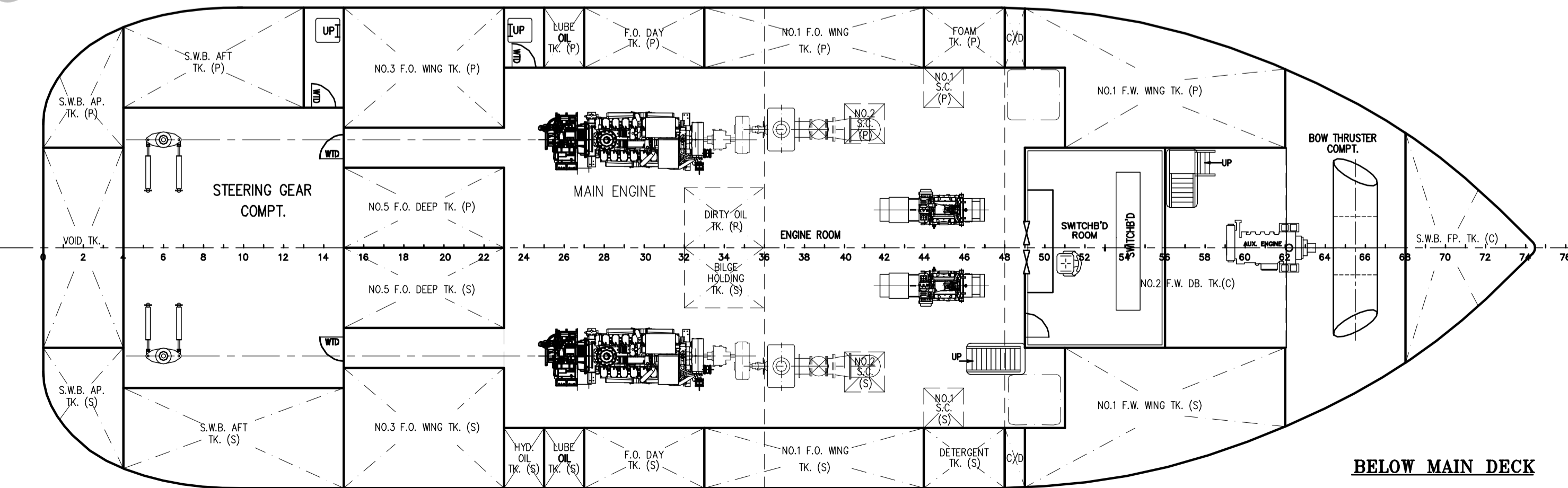
MAIN DECK PLAN



WHEELHOUSE DECK

PRINCIPAL DIMENSIONS

LENGTH OVERALL	38.00 M
LENGTH WATERLINE	36.30 M
LENGTH B.P.	33.40 M
BREADTH MOULDED	11.80 M
DEPTH MOULDED	4.80 M
DESIGN DRAFT MOULDED	3.80 M
COMPLEMENT	18 MEN
FUEL OIL	320.0 TONNES
FRESH WATER	150.0 TONNES
TOTAL POWER	2 x 1800 BHP
TRIAL SPEED	12.0 KNOTS
BOLLARD PULL (AHEAD)	40.0 TONNES



BELOW MAIN DECK

**NOT REVIEWED
Acknowledged for Record
Only**

THIS DOCUMENT AND THE INFORMATION IT CONTAINS IS COPYRIGHT AND REMAINS THE PROPERTY OF KHIAM CHUAN MARINE PTE LTD. IT IS NOT TO BE COPIED IN WHOLE OR IN PART OR DISCLOSED TO ANY THIRD PARTY FOR ANY PURPOSE WHATSOEVER WITHOUT PRIOR WRITTEN CONSENT.

1. AMENDED AS PER YARD'S COMMENTS		iml/lai	21-11-07
ITEM	DETAILS OF MODIFICATION	BY	DATE
 KHIAM CHUAN MARINE PTE LTD 15, HILLVIEW TERRACE, SINGAPORE 669226 TEL: 67753383 (6 LINES) FAX: 67753788 EMAIL: khamchuan@kcm.com.sg			
PROJECT			
38m TWIN SCREW ANCHOR HANDLING TUG			
TITLE			
GENERAL ARRANGEMENT			
CLASSIFICATION		HULL NO. SSS166	
DRAWN	CHECKED	SCALE	DRAWING NUMBER
HUBIAO		1:100	KCM/Q386(F)-G1
13-09-07			1