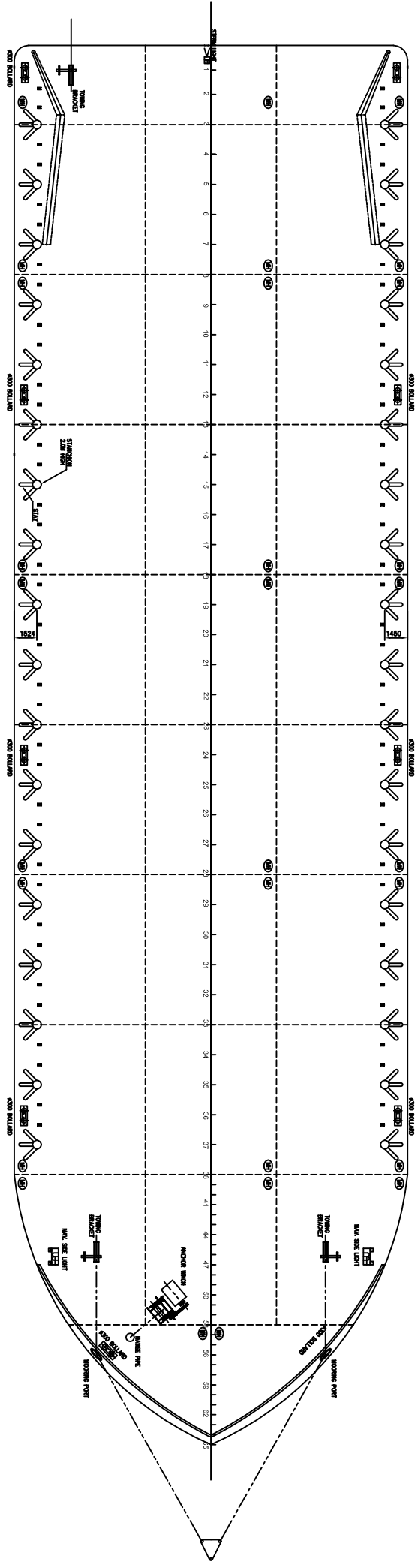


PROFILE



MAIN DECK

PRINCIPAL PARTICULARS
 LENGTH O.A. 289'-0" (88.344 m)
 BREADTH MLD 89'-0" (27.134 m)
 DEPTH MLD 18'-0" (5.486 m)
 PERMISSIBLE DECK LOADING 12 TONNES/M² D.L.
 ALL COMPARTMENTS ARE VOID

MARINE DESIGNS PTE. LTD.
 8th Fl., Pandon Loop, #01-25, Pandon Industrial Complex,
 Singapore, 128384
 Tel: 87792801 & 87791482 Fax: 87792728

PROJECT	280' x 90' x 18' DECK CARGO BARGE		
TITLE	GENERAL ARRANGEMENT		
REV.	1	NOV. 2002	17/06/02
DATE	18.03.2002	SCALE :	1 : 125
DRAWN :	L.C.T.	PROJECT CODE :	P/904
CHECKED :		DRG. NO. :	904 - 1

CLASSIFICATION: ABS - ALL BARGES

THE CONTRACTOR SHALL BE RESPONSIBLE FOR OBTAINING ALL NECESSARY APPROVALS AND PERMITS FROM THE RELEVANT AUTHORITIES AND FOR THE PROVISION OF ALL NECESSARY INFORMATION TO THE RELEVANT AUTHORITIES.