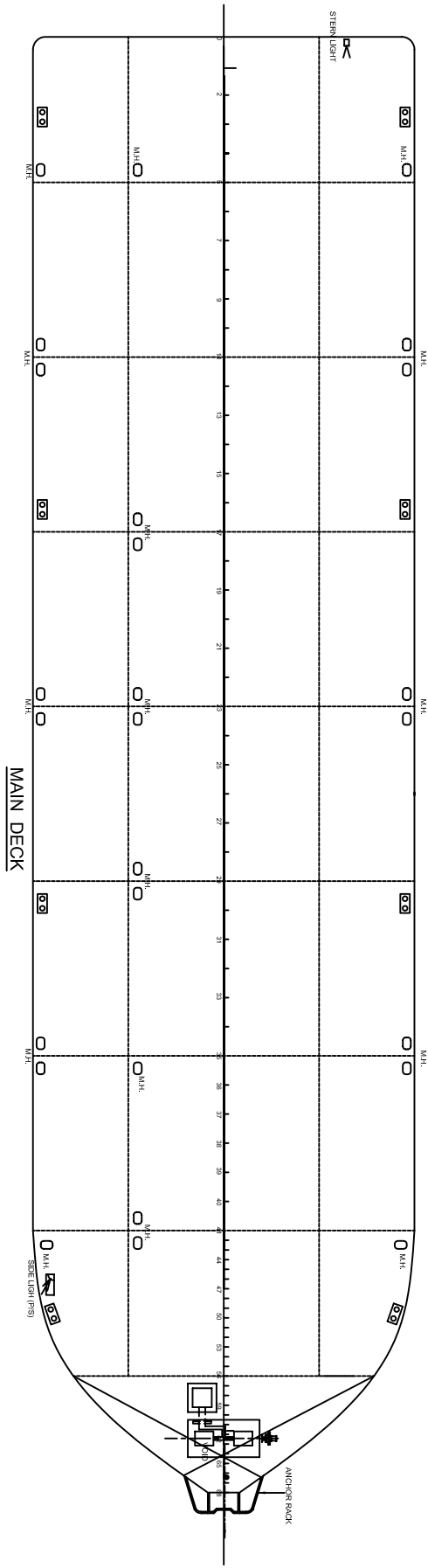
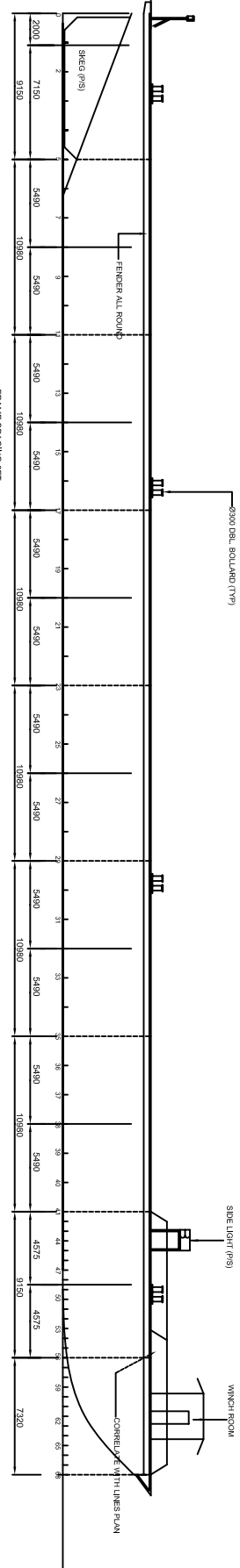


DECK CARGO BARGE (91.5M X 24.4M X 5.5M)

| MAIN PARTICULARS | | |
|------------------|------|---------------------------|
| L.O.A. | 300' | MAX. DRAFT |
| BEAM M/LD | 80' | DEADWEIGHT |
| DEPTH M/LD. | 18' | DECK LOADING |
| SIDE LIGHT (P/S) | | WINCH ROOM |
| SIDE LIGHT (P/S) | | ANCHOR BACK |
| | | WINDHOLE WITH LINES PLAIN |
| | | WINDHOLE WITH LINES PLAIN |
| | | WINDHOLE WITH LINES PLAIN |
| | | WINDHOLE WITH LINES PLAIN |
| | | WINDHOLE WITH LINES PLAIN |

PROFILE



| CONAN WU & ASSOCIATES | | | | |
|---|----------|--------------------------|------|----|
| NAVAL ARCHITECTS | | | | |
| 1505 MARKET STREET, SUITE 200, SAN FRANCISCO, CALIFORNIA 94102 | | | | |
| TEL: (415) 774-2323 FAX: (415) 774-2324 (415) 774-2325 E-MAIL: info@conanwu.com | | | | |
| DATE | 22-02-04 | REVISION | NO. | 01 |
| BY | | CHECKED | DATE | |
| SHIP: 91.5M x 24.4M x 5.5M | | | | |
| DECK CARGO BARGE | | | | |
| TITLE: GENERAL ARRANGEMENT | | | | |
| OWNER: NAVAL ARCHITECTS | | YARD NO. 207/20-105 | | |
| NUMBER: 1505 MARKET STREET, SUITE 200, SAN FRANCISCO, CALIFORNIA 94102 | | CLASS: | | |
| SCALE: 1:150 | | DRAWING NO.: C1939A/G-10 | | |
| REV | | | | |