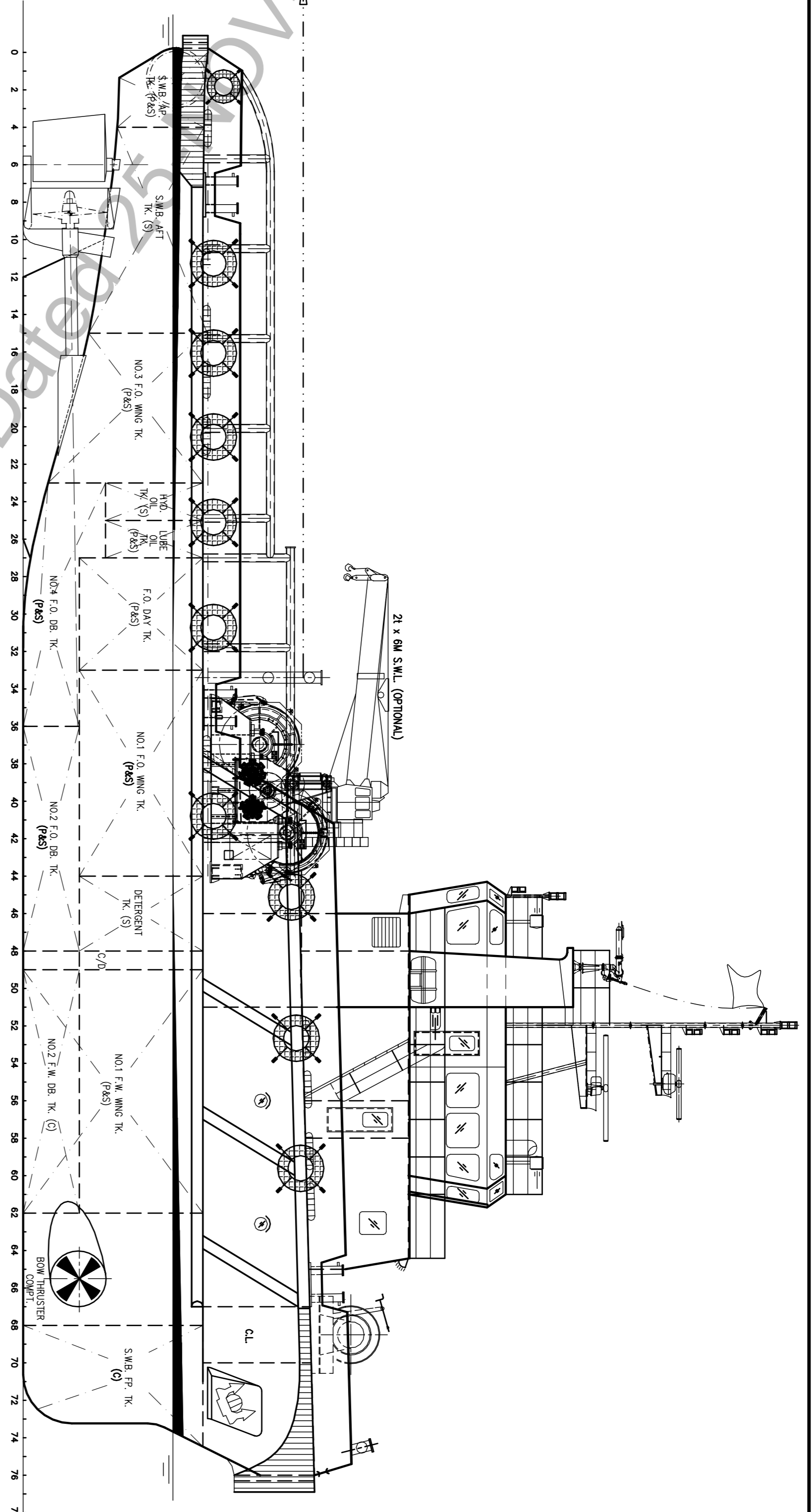
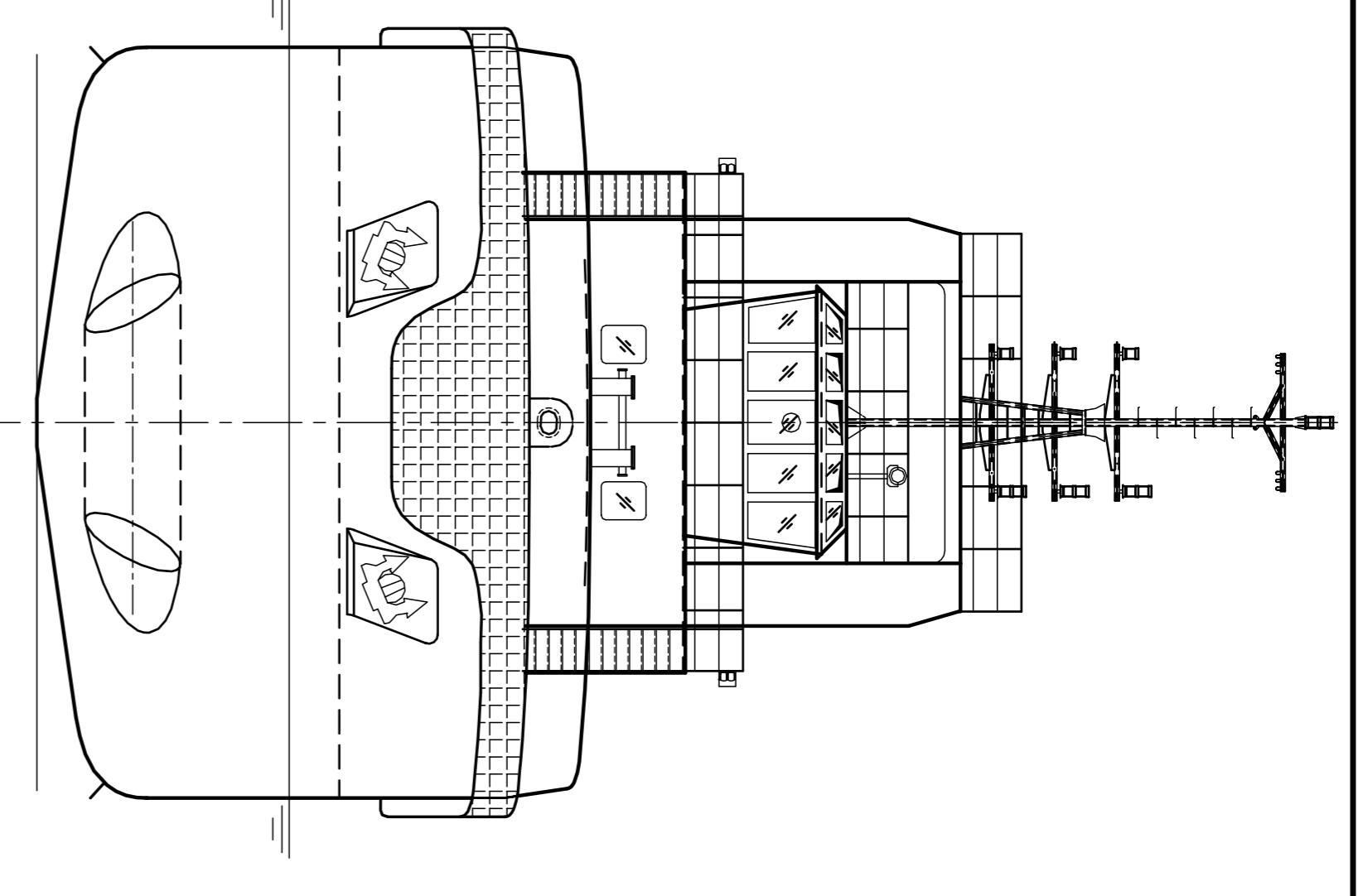


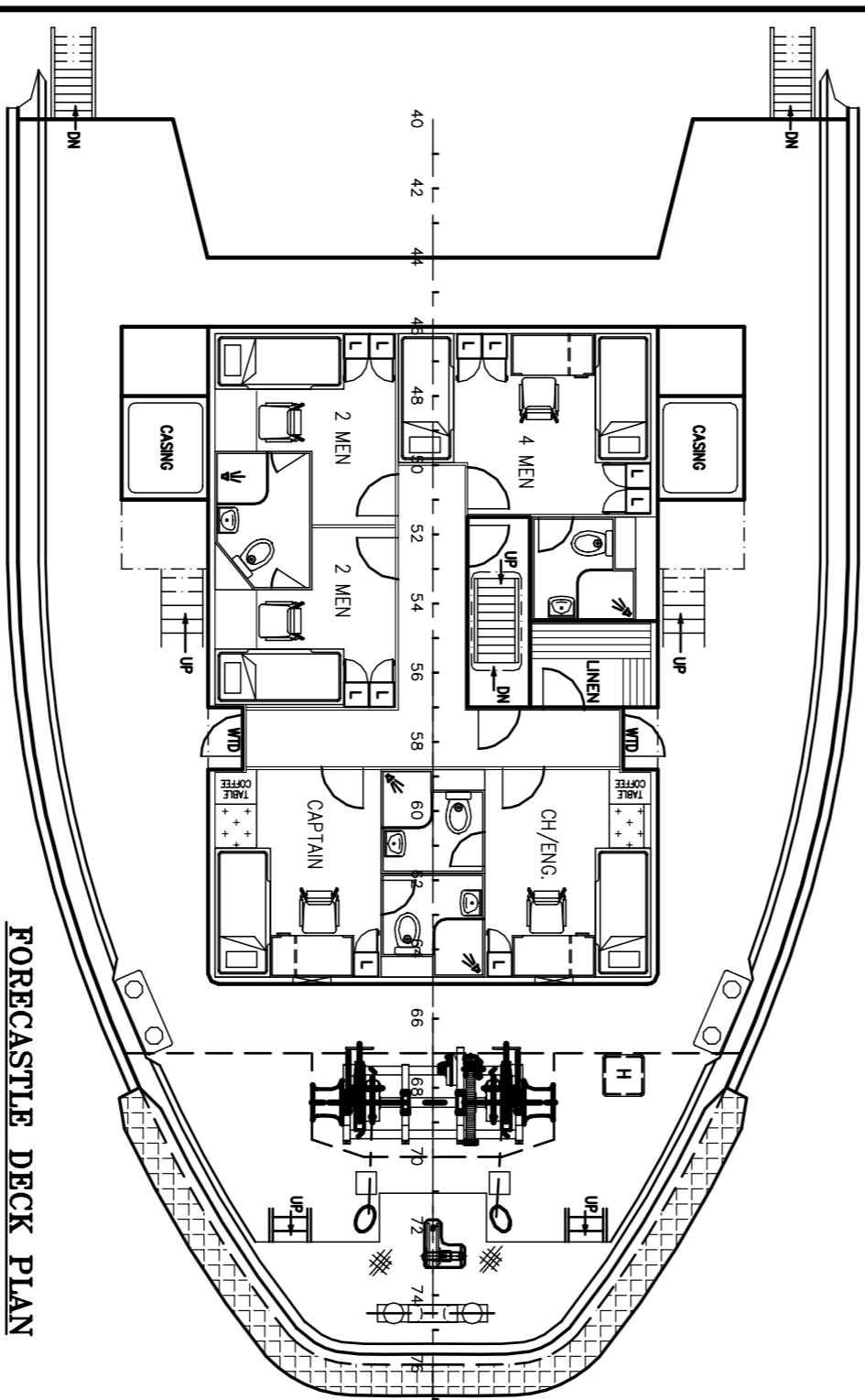
STERN VIEW



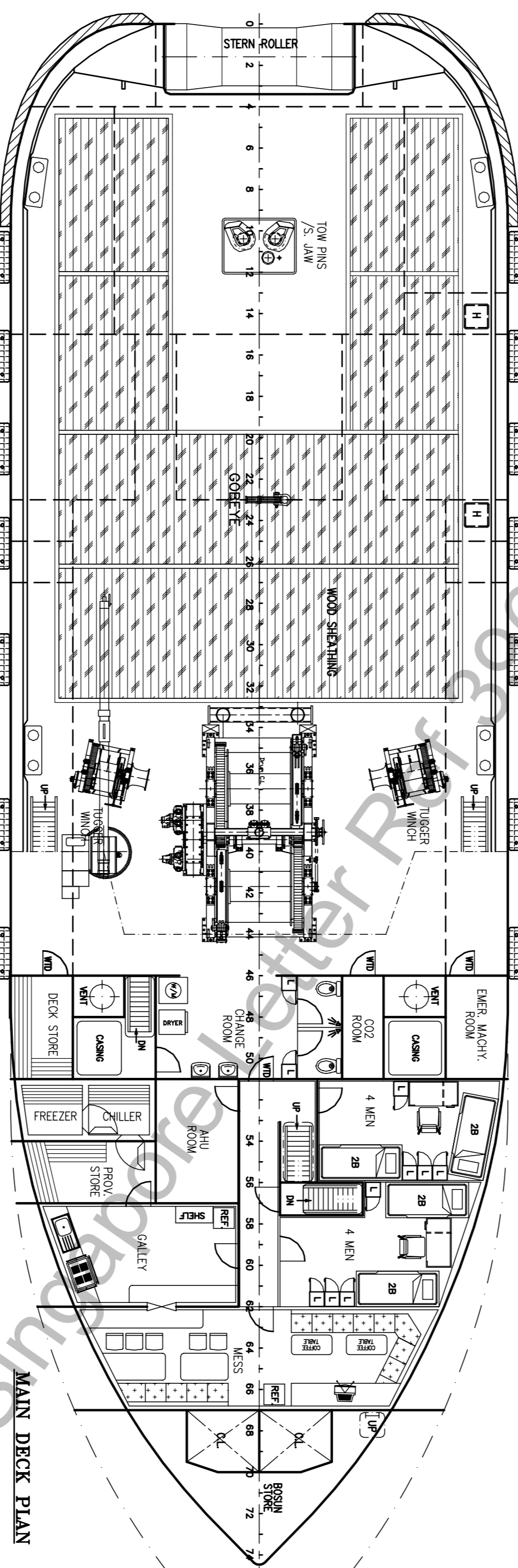
OUTBOARD PROFILE



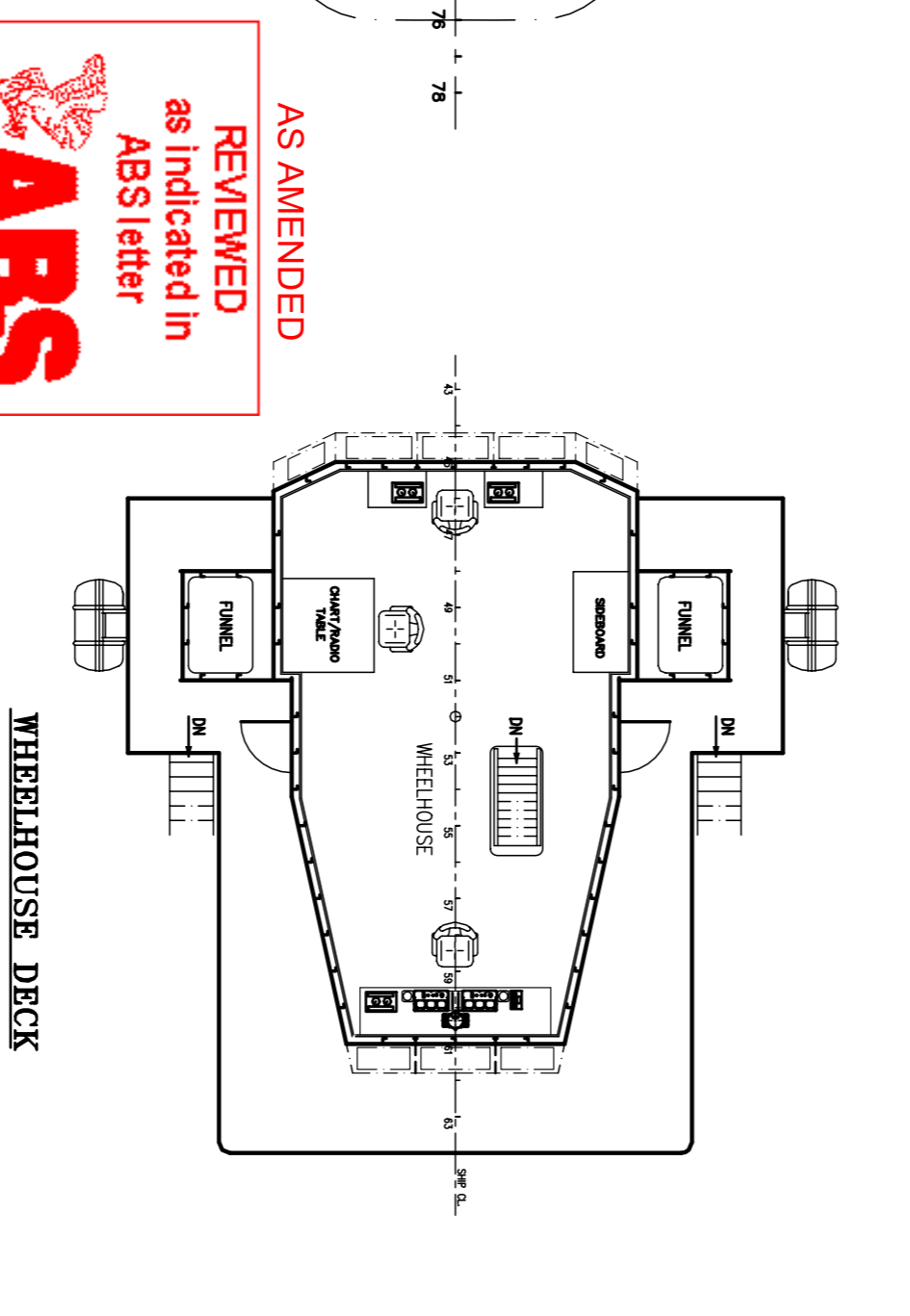
FRONT VIEW



FORECASTLE DECK PLAN



MAIN DECK PLAN



WHEELHOUSE DECK

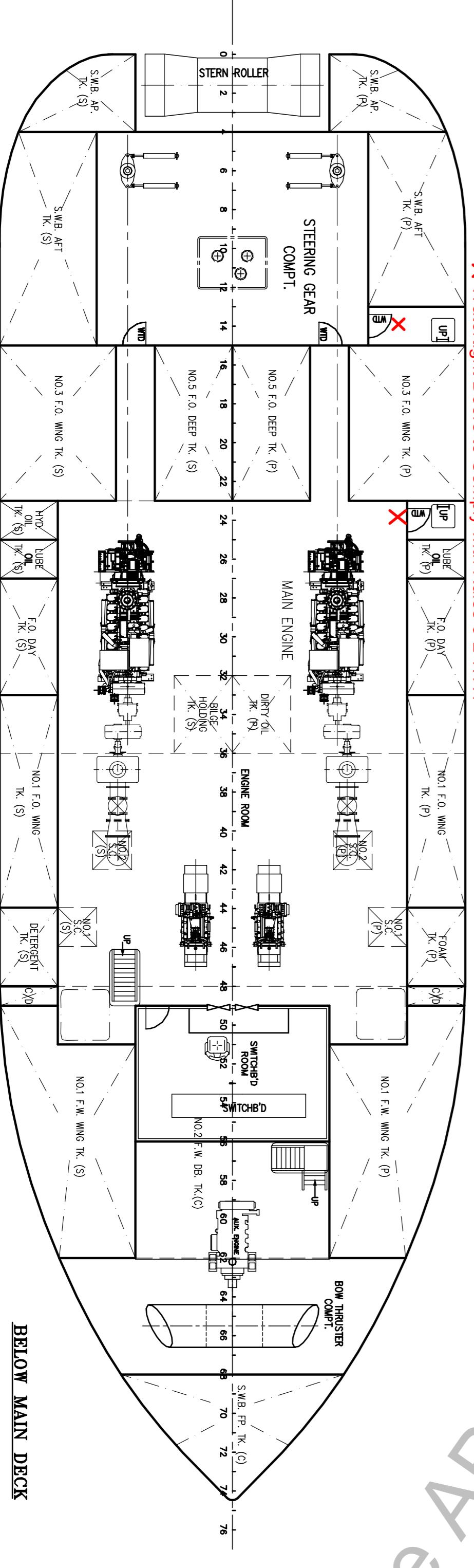
PRINCIPAL DIMENSIONS

- LENGTH OVERALL 38.00 M
- LENGTH WATERLINE 36.30 M
- LENGTH B.P. 33.40 M
- BREADTH MOULDED 11.80 M
- DEPTH MOULDED 4.80 M
- DESIGN DRAFT MOULDED 3.80 M
- COMPLEMENT 18 MEN
- FUEL OIL 320.0 TONNES
- FRESH WATER 150.0 TONNES
- TOTAL POWER 2200 BHP
- TRIAL SPEED 12.0 KNOTS
- BOLLARD PULL (AHEAD) 60.0 TONNES

X Watertight Doors to Comply with Rules 3-2-7/7.1

AMENDED BY ABS

AS AMENDED
REVIEWED
as indicated in
ABS letter



BELOW MAIN DECK

THIS DOCUMENT AND THE INFORMATION IT CONTAINS IS COPYRIGHT AND REMAINS THE PROPERTY OF KHIAM CHUAN MARINE PTE. LTD. IT IS NOT TO BE COPIED OR REPRODUCED IN ANY MANNER WITHOUT THE WRITTEN CONSENT.

PROJECT		38m TWIN SCREW ANCHOR HANDLING TUG	
TITLE			
GENERAL ARRANGEMENT			
CONTRACT NO.	SSS176/SSS186	DRAWING NO.	KCM/0386(E)-G1
DATE		SCALE	1:100
BY		CHECKED	
DATE		REV.	
CONSULTANT KHIAM CHUAN MARINE PTE LTD 15, HILLVIEW TERRACE, SINGAPORE 669226 TEL: 67753383 (6 LINES) FAX: 67753788 EMAIL: khiamchuan@kcm.com.sg			